

MONTHLY MEMBERSHIP PROGRESS REPORT

District 33 S

Results as of: 4/30/2024

GMT:

LOCATION MASSACHUSETTS

GMT CA

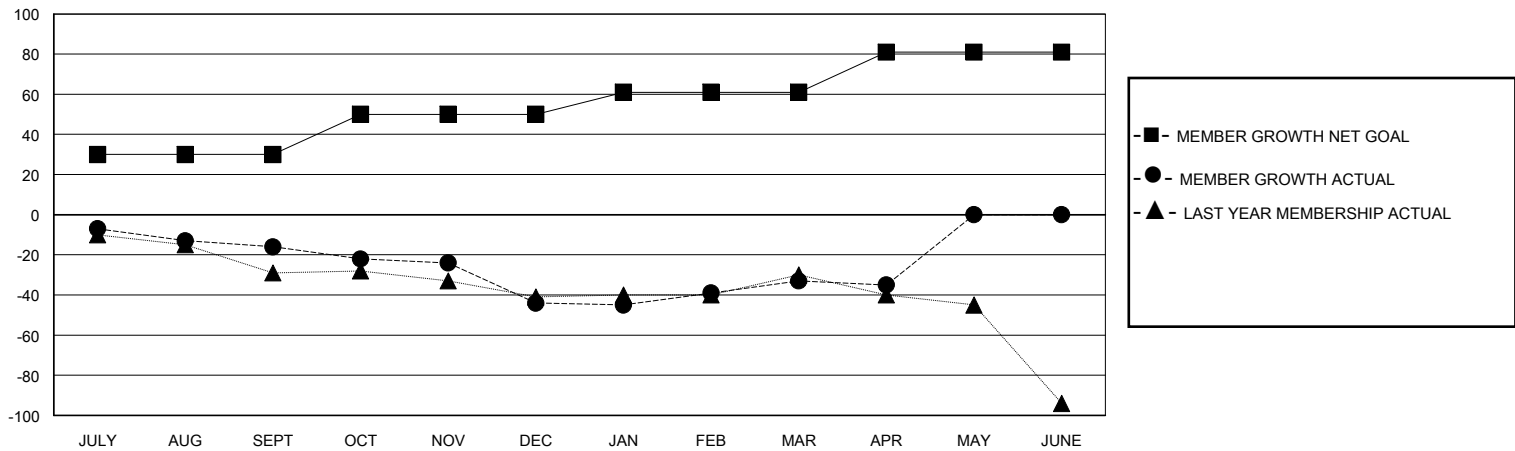
Clubs			
RESULTS FOR 2023-2024			
QUARTER	NEW CLUB GOAL	NEW CLUBS	DROPPED CLUBS
JULY/AUG/SEPT	0	0	1
OCT/NOV/DEC	0	0	0
JAN/FEB/MAR	1	0	0
APR/MAY/JUNE	0	0	0

Members			
RESULTS FOR 2023-2024			
QUARTER	MEMBER GROWTH NET GOAL	MEMBER GROWTH ACTUAL	DROPPED MEMBERS ACTUAL (including transfers)
JULY/AUG/SEPT	30	22	37
OCT/NOV/DEC	20	30	52
JAN/FEB/MAR	11	40	26
APR/MAY/JUNE	20	5	6

GOALS AND ACTUAL NEW CLUBS CUMULATIVE



GOALS AND ACTUAL MEMBERS CUMULATIVE



DROPPED CLUBS: 1

24 CLUBS OF 47 ADDED 1 OR MORE NEW MEMBERS

GENDER DISTRIBUTION

MALE 871 (60.07%)
FEMALE 578 (39.86%)

DROPPED MEMBERS

DECEASED	23
CLUB CANCELLED	0
OTHER	98
TOTAL	121

[CLICK HERE FOR CUMULATIVE MEMBERSHIP DATA](#)

TOTAL FAMILY UNIT MEMBERS	230
FAMILY MEMBERS PAYING HALF DUES	117